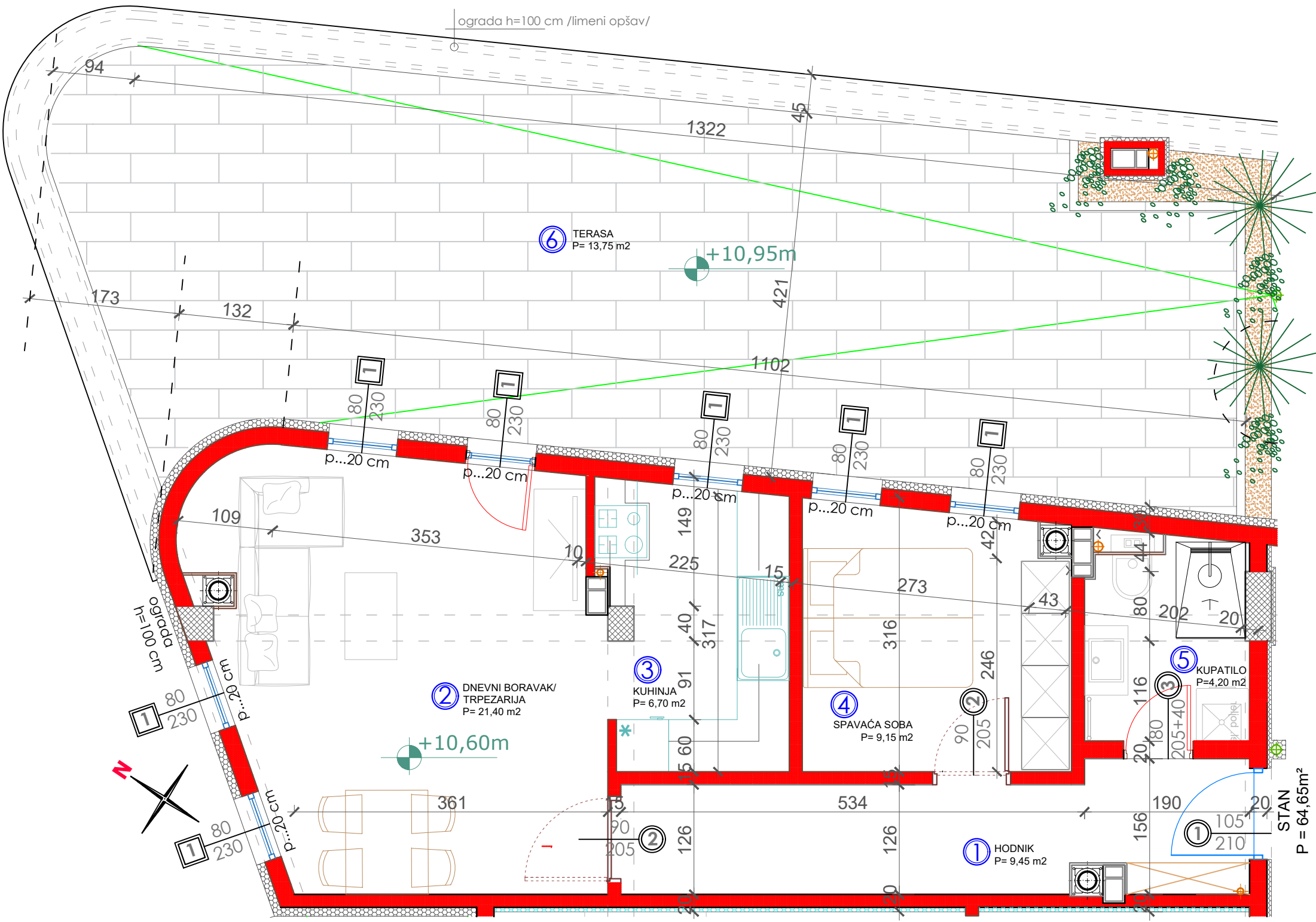


ograda h=100 cm /limeni opšav/



6 TERASA  
P= 13,75 m<sup>2</sup>

+10,95m

2 DNEVNI BORAVAK/  
TRPEZARIJA  
P= 21,40 m<sup>2</sup>

3 KUHINJA  
P= 6,70 m<sup>2</sup>

4 SPAVAĆA SOBA  
P= 9,15 m<sup>2</sup>

5 KUPATILO  
P=4,20 m<sup>2</sup>

1 HODNIK  
P= 9,45 m<sup>2</sup>

STAN  
P= 64,65m<sup>2</sup>

+10,60m

